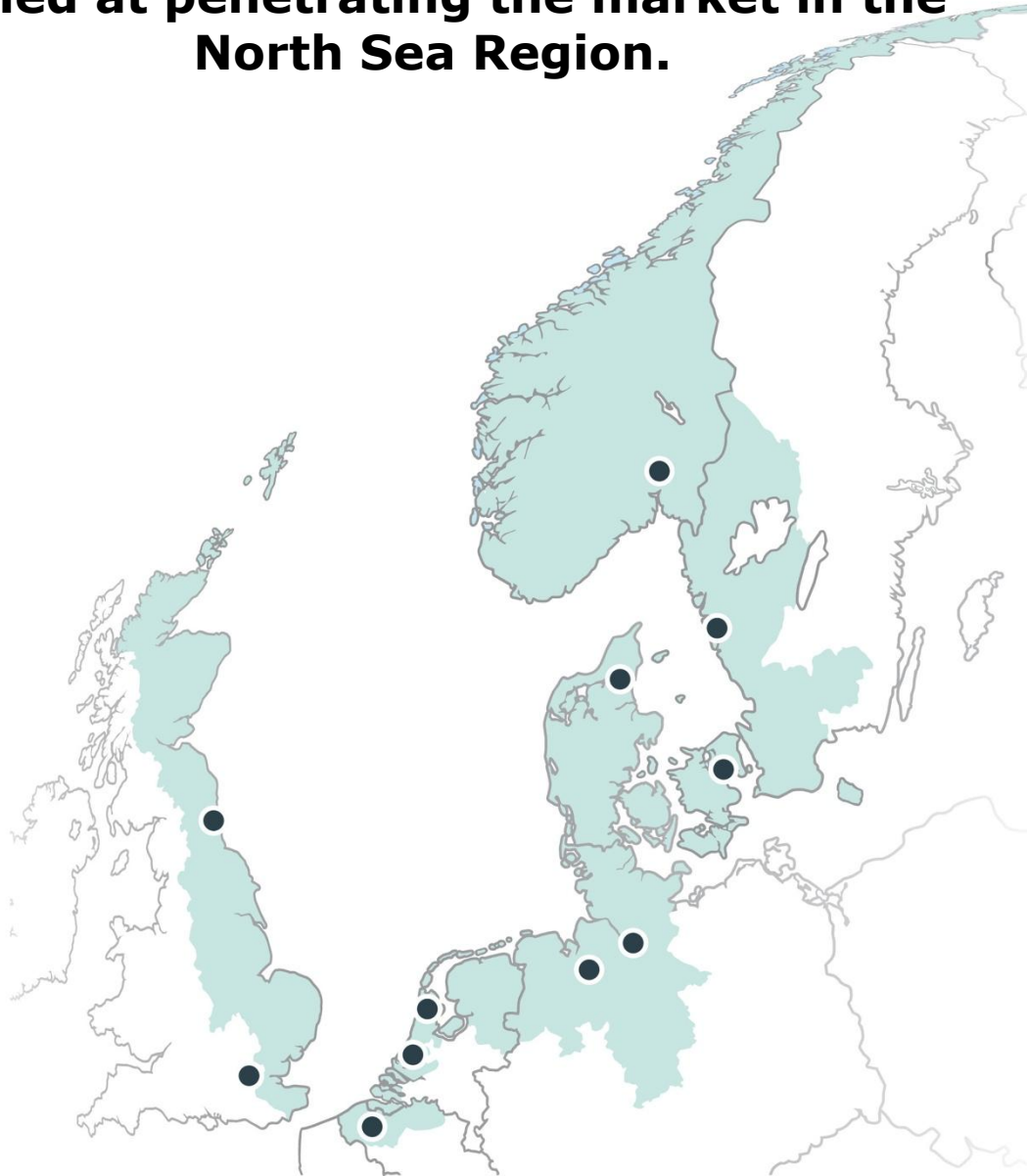




NORTH SEA REGION ELECTRIC MOBILITY NETWORK

e-mobility **NSR**

Mapping of current E-Mobility activities, campaigns and information channels aimed at penetrating the market in the North Sea Region.



COMPILATION REPORT

Hamburg University of Applied Sciences, FDT, Lindholmen Science
Park AB, Delft University of Technology, WFB Bremen GmbH,
Northumbria University, Province of North Holland, Cities Institute,
Zero Emission Resource Organisation

Høje-Taastrup Kommune – August 2013

List of content:

1. Introduction.....	3
2. Methodology	4
3. Extract of compiled information	5
4. Examples of E-Mobility activities, campaigns and information channels in Germany	6
5. Examples of E-Mobility activities, campaigns and information channels in Denmark	11
6. Examples of E-Mobility activities, campaigns and information channels in Holland	12
7. Examples of E-Mobility activities, campaigns and information channels in England	15
8. Examples of E-Mobility activities, campaigns and information channels in Sweden	18
9. Examples of E-Mobility activities, campaigns and information channels in Norway	19
Appendix 1 – Instruction and questionnaire.....	20
Appendix 2 - “Benchmark elektrish rijden” from Holland	22
Appendix 3 - “Cijfers Elektrisch Rijden” from Holland	23
Appendix 4 - “Achtergrondinformatie Elektrisch Rijden” from Holland.....	24



1. Introduction

This compilation report is completed as part of the Interreg IVB North Sea Region Programme "E-Mobility NSR" project.

This report aims to show a "snap shot" map of current E-Mobility activities, campaigns and information channels aimed at penetrating the market in the North Sea Region.

The objective is to provide important background information for the development of E-Mobility Information Centre Guidelines (Activity 6.8) as part of the "E-Mobility NSR" project Work Package 6:

Set up Transnational Electricity Mobility Information Centres (EMIC).

To ensure transnational relevance and validity the information in the report has been compiled with input from the following North Sea Region countries:

- Norway
- Sweden
- Denmark
- Germany
- Holland
- England

Please refer to the following homepages for further information about the Interreg IVB North Sea Region Programme and the "E-Mobility NSR" project:

- <http://e-mobility-nsr.eu>
- <http://www.northsearegion.eu/ivb/home/>

2. Methodology

The information in this report is compiled based on transnational data from the following “E-Mobility NSR” project partners:

- Hamburg University of Applied Sciences, Germany
- FDT, Denmark
- Lindholmen Science Park AB, Sweden
- Delft University of Technology, Holland
- WFB Bremen GmbH, Germany
- Northumbria University, England
- Province of North Holland, Holland
- Cities Institute, England
- Zero Emission Resource Organisation, Norway

A written questionnaire with an introduction (please refer to Appendix 1) was forwarded by mail to the contact person of each project partner and they were asked to reply in writing.

The data collection period was 01/09/2011 – 31/07/2012.

All replies are mapped by country by Work Package 6 Responsible Beneficiary Høje-Taastrup Kommune (Denmark) in this compilation report together with any additional material (reports, strategy papers etc.) forwarded by the project partners.

The map provides a non-biased overview of the “Top-of-Mind” E-Mobility activities, campaigns and information channels in each of the participating North Sea Region countries.

3. Extract of compiled information

From an overall perspective the compiled data in this report makes it clear that:

1) There are quite a large number of E-Mobility activities and campaigns being conducted in most of the North Sea Region countries participating in this report.

2) E-Mobility information sources are already available in some North Sea Region countries.

Both these findings underlines the need for a thorough stakeholder analysis before establishing a new EMIC in order to identify where (if at all) an EMIC can add new value to the target group and to identify potential partners/contributors etc.

The above will serve as valuable input when preparing the E-Mobility Information Centre Guidelines (Activity 6.8) as part of the "E-Mobility NSR" project Work Package 6.

4. Examples of E-Mobility activities, campaigns and information channels in Germany

Name and contact data for beneficiary supplying the data:

Name of Beneficiary:		HAW Hamburg
Country:		Germany
Contact person:	Name:	Franziska Mannke, Johanna Vogt
	E-mail:	e-mobility@ls.haw-hamburg.de
	Phone:	+49 40 42875 6107

Data category:	Data:	Source:
Activities	<p><u>Competence centre for electro mobility Schleswig-Holstein</u></p> <p>The competence-centre of the University of Applied Sciences Kiel is an initiative that supports the transfer from technology-knowledge from institutes of science (especially from Fachhochschule Kiel) to companies that work on E-Mobility.</p> <p>Information and knowledge transfer from science to application in companies. With many partners the University of Applied Sciences Kiel works on the following issues:</p> <ul style="list-style-type: none"> • Optimization of electric components and their costs, functionality and integration in the complete system e-vehicle. • Consolidation of the competence in the Fachhochschule Kiel • Increasing the power of regional industry in E-Mobility sectors • Education of competent academics for the region <p><u>The eLCAR (E-Mobility Life Cycle Assessment Recommendations) project</u></p> <p>The eLCAR project is a collaboration of 3 German and 1 Swiss Institutes.</p> <p>It aims at supporting the process of assessing the environmental impact of each life cycle phase of electric vehicles by creating tailored guidelines derived from the ILCD Handbook from the European Joint Research Centre.</p> <p>The project work plan reflects the broad range of topics such as battery and electric component production, typical vehicle utilization and driving cycles, interaction between</p>	<p>http://iueifm12-325-2.hrz.isc.fh-kiel.de/~kesh/index.php/projekte/index.php?option=com_content&view=frontpage&Itemid=1</p> <p>http://www.elcar-project.eu/</p>

electricity storage, power generation and grid services, as well as end of life and recycling by covering the different stages of an EV's life.

The project is **supported by the European Commission** under the Environment (including climate change) theme of the 7th Framework Programme for Research and Technological Development.

Hamburg Goes Green

It is a **Car-sharing initiative** from the **mo-tronic GmbH** that wants to bring far more mini-e-vehicles on the streets.

The mo-tronic GmbH makes tests with the mini-e-vehicles (Model: Biro Öps) and wants to use about 200 of these vehicles in a car-sharing project.

The vehicles are coming with very minimal configuration and due to that they try to increase their range.

The mo-tronic GmbH offers renting of E-Bikes, E-Rollers or E-car Biro Öps. The customers can use the charging points with a chip card.

First conducted in Hamburg. With more long time experience the mo-tronic GmbH wants to bring it to further cities.

The project is in the testing phase and more information and data are gathered at the moment.

Leuchtturmprojekte der Elektromobilität 20/06/2012

The German government chose projects from its electric mobility program as so-called "**Leuchtturmprojekte der Elektromobilität**" (Lighthouse projects) to underline the importance of these projects.

Presentation of the project e-ignition Hamburg from TU Hamburg-Harburg 04/23/2012

A group of students built up a high-speed test car.

<http://www.hamburggoesgreen.de>

<http://www.bmwi.de/BMWi/Redaktion/PDF/Leuchtturmprojekte-der-elektromobilitaet,property=pdf,bereich=bmwi2012,sprache=de,rwb=true.pdf>

<http://egniton-hamburg.de/>

Campaigns

Joey`s Pizza is testing some electric vehicles for its fleet

With 1 e-car and 6 scooters Joey`s Pizza is testing the possibilities for using e-vehicles for

<http://www.saving-volt.de/2012/04/joey-s-pizza-will-lieferflotte-auf-elektrofahrzeuge-umstellen/>

	<p>its fleet and wants to use them in other cities when the tests succeed.</p>	
<p>Networks</p>	<p><u>Elektromobilität Hamburg</u> It is a consortium of about 100 partners from the economy, sciences and institutes that has developed a master plan for the City of Hamburg and its future development.</p> <p>It is part of the program „Modellregionen Elektromobilität“ from the Bundesministerium für Verkehr, Bau und Stadtentwicklung (BMVBS).</p> <p>Elektromobilität Hamburg gives an important strategy for the coming development in the field of E-Mobility and aims to a climate friendly structure of the intra-city mobility.</p> <p>It was built up during the application phase for the sponsorship program "Schaufenster Elektromobilität" from the German Government, so it has certain contacts to the politics.</p> <p>The main parts are concentrating on:</p> <ul style="list-style-type: none"> • Solutions for the E-Mobility transport sector in the economy • Building up a grid of intra-city charging points • Multi modular concepts of mobility <p>Gathering knowledge in the followings points is also requested:</p> <ul style="list-style-type: none"> • Application from E-Mobility vehicles in daily use • The need of infrastructure of charging points • Technology standards of e-vehicles and charging points • Acceptance of vehicles from today and coming users <p><u>e8energy</u> E8energy built up a network with companies in research, production and the service sector. It is a company that offers innovative and sustainable E-Mobility concepts with the context of only using renewable energy sources.</p> <p>E8energy aims to build up a supra-regional charging-infrastructure which is only energized from renewable energy sources. They plan and follow every step from the production of energy to the usage.</p>	<p>http://www.elektromobilitaethamburg.de/</p> <p>http://www.e8energy.de/</p>

	<p>An own charging-infrastructure is offered. E8energy also informs about certain activities in the E-Mobility sector.</p> <p><u>E-Mobility - Leichtbauteile für die Elektromobilität</u> It is a network of suppliers in the car industry.</p> <p>Some companies from Hamburg are part of the network, but most partners are located in the south of Germany.</p> <p>The position of the partners shall be strengthened through the networking activities. Co-operations between partners are requested. New partners should be involved to take part in every sector of delivery-firms.</p> <p>The focus goes on new developments for e-vehicles and common activities.</p> <p>The following workshops have already started:</p> <p>AK1: Energy management AK2: Integrated electric engine /chassis AK3: carriage AK4: vehicle application, vehicle composition, Airport Systems</p> <p>Netzwerkmanagement EurA Consult AG</p>	<p>Http://www.emobilight.de</p>
Information channels	<p>E-Mobility NSR EMIC – E-Collection e.v.</p>	<p>http://www.deutschland-elektrisieren.de/</p>
Others	<p><u>E-car-Sharing in Hamburg</u> e collection http://www.deutschland-elektrisieren.de</p> <p>Car2go https://www.car2go.com/hamburg/de/</p> <p>Greenpeace Energy und Cambio http://www.cambio-carsharing.de</p> <p>http://www.greenpeace-energy.de/ueberuns/energiepolitik/elektromobilitaet-carsharing.html</p> <p>Lautlos durch Deutschland http://www.kiel.lautlos.com/index.php?id=1418</p> <p>Flinkster http://www.flinkster.de/</p>	

Name and contact data for beneficiary supplying the data:

Name of Beneficiary:	Wirtschaftsförderung Bremen GmbH	
Country:	Germany	
Contact person:	Name:	Zepeda Juarez, Jesus
	E-mail:	Jesus.Zepeda-Juarez@wfb-bremen.de
	Phone:	+49 0421 9600 334

Data category:	Data:	Source:
Activities	<p>e4ships</p> <p>Project STEP (new <u>membrane electrode assembly</u>)</p> <p>Living Lab BW E-Mobil (Baden-Württemberg, show window)</p> <p>BeMobility (demonstration program – Evs)</p> <p>"Mein Haus, meine Tankstelle"</p>	<p>http://www.now-qmbh.de</p> <p>http://www.bmbf.de/press/3255.php</p> <p>http://www.deutschebahn.com/de/nachhaltigkeit/oekologie/partner_kooperationen/bemobility_umwelt.html</p> <p>http://www.bmvbs.de/DE/EffizienzhausPlus/Elektromobilitaet/effizienzhaus-plus-elektromobilitaet_node.html</p>
Campaigns	National Platform E-Mobility (progress report)	http://www.bmu.de/verkehr/elektromobilitaet/nationale_plattform_elektromobilitaet/doc/45970.php (NPE)
Networks	Bundesverband eMobilität e.V. (political Network)	http://www.bem-ev.de
Information channels	<p>NOW (Web pages with information about E-Mobility)</p> <p>ADAC (Web pages with information about EVs and E-Mobility)</p> <p>E-Mobil (Web pages information about E-Mobility and Events)</p>	<p>http://www.now-gmbh.de (NOW)</p> <p>http://www.adac.de/infotestat/adac-im-einsatz/motorwelt/emobilitaet2.aspx</p> <p>http://www.e-mobilbw.de</p>
Others	<p>e³ Program (<u>energy company</u>)</p> <p>E.ON eMobil</p> <p>Lautlos durch Deutschland (national network of resellers and service)</p>	<p>http://www.ewe.de/ewe-macht-zukunft/e3-Programm.php (e³)</p> <p>https://www.eon.de/de/eon.de/pk/produkteUndPreise/E.ON_eMobil/index.htm</p> <p>http://www.lautlos.com/</p>

5. Examples of E-Mobility activities, campaigns and information channels in Denmark

Name and contact data for beneficiary supplying the data:

Name of Beneficiary:	FDT – Association of Danish Transport Centres
Country:	Denmark
Contact person:	Name: Michael Stie Laugesen
	E-mail: mssl@ntu.eu
	Phone: 99 30 00 30

Data category:	Data:	Source:
Activities	<p>Electric cars are exempted from registration taxes until 2015</p> <p>Funding programme under Danish Energy Agency</p> <p>BetterPlace Denmark</p> <p>The following organisations work with EV's in DK.</p> <ul style="list-style-type: none"> • Betterplace Danmark • DONG Energy • Clever • Trafikstyrelsen • Energistyrelsen • Aarstiderne • Inero E-Mobility • To Door • Etc. 	<p>www.retsinfo.dk</p> <p>http://www.ens.dk/da-DK/NyTeknologi/om-eudp/Sider/Forside.aspx</p> <p>http://www.ens.dk/da-DK/KlimaOgCO2/Transport/elbiler/Sider/Forside.aspx</p> <p>http://danmark.betterplace.com/?gclid=CLWhz-IjLMCFTJ2cAodXkqAeg</p>
Campaigns	-	-
Networks	<p>Inero E-Mobility</p> <p>Dansk Elbilsalliance</p> <p>Dansk Elbilskomite</p> <p>CLEVER</p> <p>Betterplace</p> <p>Cleardrive</p> <p>Trafikstyrelsen</p> <p>E-Drive</p>	<p>http://www.danskelbilalliance.dk/</p> <p>http://www.danskelbilkomite.dk/</p> <p>http://www.clever.dk/forside/</p> <p>http://danmark.betterplace.com/?gclid=CLWhz-IjLMCFTJ2cAodXkqAeg</p> <p>http://www.cleardrive.dk/</p> <p>http://www.trafikstyrelsen.dk/DA/Groen-Transport/Elbiler/Status-i-Danmark.aspx</p> <p>http://www.e-drive.dk/</p>
Information channels	E-Mobility Information Centre opened by Høje-Taastrup Kommune as part of the Interreg IVB "E-Mobility NSR" program.	www.elbiler.nu
Others	-	-

6. Examples of E-Mobility activities, campaigns and information channels in Holland

Name and contact data for beneficiary supplying the data:

Name of Beneficiary:	MRA Elektrisch
Country:	The Netherlands
Contact person:	Name: Christine van 't Hull
	E-mail: c.vant.hull@ivv.amsterdam.nl
	Phone: 0031 6 519141 35

Data category:	Data:	Source:
Activities	<ul style="list-style-type: none"> The Netherlands wants to be the international pilot area for EV. Goal is 15.000 to 20.000 e-cars in 2015 and 200.000 in 2020. The Formula E-team is a collaboration of Dutch trade and industry, institutes and administration (like the focus areas) under the chairmanship of the ministry of I&M. The Formula E-team stimulates breakthroughs in electric mobility in amongst others infrastructure, batteries and availability of vehicles. The ministry I&M closes Green Deals with focus areas for EV in the Netherlands in order to stimulate E-Mobility MRA Electric is a project of the Amsterdam Metropolitan Area. One of the focus areas in the Netherlands to stimulate E-Mobility containing 34 municipalities, the province of NH and province of Flevoland and RWS. A Green Deal of the ministry I&M with MRA Electric will be closed 3/9/12 Other focus areas in the Netherlands are Noord-Brabant, Friesland, cities as Rotterdam, Amsterdam, Utrecht, Den Haag. Subsidy scheme e-taxi and e-lorry Ministry EL&I September 2012: 3.000 to 5000 euro for an e-lorry or e-taxi. Subsidy schemes (City of Amsterdam for e-vehicles since January 2012, city Zaanstad) E-laad foundation (cooperation of Dutch grid operators): aim is 10.000 charging points in the Netherlands. Now there are 1.500 e-laad charging points realised. Several tax advantages when purchasing e-car: no purchase tax, no motor vehicle tax, no addition when leasing a car, advantages with environmental investments (MIA) and VAMIL 	<p>http://www.agentschapnl.nl/onderwerp/kansen-elektrisch-rijden-voor-autorijders</p>


	<ul style="list-style-type: none"> • Agentschapnl (implementing organization for ministry EL&I) 	http://www.agentschapnl.nl/node/126278
Campaigns	<ul style="list-style-type: none"> • Public campaigns by several car manufacturers like Nissan, Renault, Opel, Fisker and local campaigns by companies in Amsterdam car2go and taxi-E. • ANWB (to compare with the federation of Danish motorists) organises amongst other things the greatest electric test rides in the Netherlands • Amsterdam subsidy scheme • Ecomobiel 9, 10 October 2012 the number one fair on green mobility. MRA Electric is one of the exhibitors • RAI Amsterdam International Motor Shows (every 2 years) • Professional Passionate Rally 14 September 2012. Over 250 socially responsible CEOs, politicians and journalists will drive in more than 250 electric cars, congress, Guinness book of records attempt. • Electric mobility centre Rotterdam • Electric mobility centre NEMO Science Centre Amsterdam (office of MRA Electric): Exhibition for the public "Everybody Electric", reception of groups, EV workshops. 	<p>http://www.anwb.nl/auto/ni-euws-en-tips/specials/elektrisch-rijden/proefrit.html</p> <p>http://www.ecomobiel.nl/</p> <p>http://ppelectricrally.nl/english-summary</p> <p>http://elektrisch-vervoer-centrum.nl/</p>
Networks	<ul style="list-style-type: none"> • Several groups on E-Mobility on LinkedIn, Face book • International networks • The New Motion (leasing e-cars, charging points) www.thenewmotion.com • Mr Green (leasing e-cars, charging points) • Zerauto • Rom-netwerk 	<p>http://www.agentschapnl.nl/onderwerp/internationale-netwerken-elektrisch-rijden</p> <p>www.zerauto.nl</p>
Information channels	<ul style="list-style-type: none"> • EV portal Formula E-partners (in creation 2013) • Portal MRA Electric (it is a start New and better website end of this year) • www.agentschapnl.nl/onderwerp/elektrisch-rijden <ul style="list-style-type: none"> • www.IvDM.nl • http://www.raivereniging.nl/dossiers/elektrische-voertuigen.aspx • http://www.agentschapnl.nl/programma-s-regelingen/truck-van-de-toekomst • http://doetdoet.nl/ • http://www2.natuurenmilieu.nl/projecten/cmmn-cargo/ • http://www.cmmncargo.org/Project/Lijst • http://www.rijksoverheid.nl/ministeries/eleni 	<p>www.mraelektrisch.nl</p>

	<ul style="list-style-type: none"> • http://www.3tu.nl/ • http://www.agentschapnl.nl/ • http://www.holland-automotive.nl/ • http://www.brabant.nl/dossiers/dossiers-op-thema/economie-en-werk/topsectoren/brabants-sterke-clusters/automotive.aspx • http://www.htacampus.com/ • http://www.ecartec.eu • http://www.cars21.com/ 	
Others	<ul style="list-style-type: none"> • "Benchmark elektrisch rijden" – see Appendix 2 • "Cijfers Elektrisch Rijden" – see Appendix 3 • "Achtergrondinformatie Elektrisch Rijden" – see Appendix 4 	

7. Examples of E-Mobility activities, campaigns and information channels in England

Name and contact data for beneficiary supplying the data:

Name of Beneficiary:	Cities Institute
Country:	UK
Contact person:	Name: Dr Stephen Shaw
	E-mail: s.shaw@londonmet.ac.uk
	Phone: 0044(0)207-133-3362

Data category:	Data:	Source:
Activities	<p>National incentives: favourable tax regime for purchasing electric cars and vans: UK Government has provided £300m for the 'Plug-In car grant' (25% up to £5k for new vehicles) and a plug-in van grant (20% per cent towards the cost of the vehicle, up to a maximum of £8k) – both of which are being reviewed 2012. Other incentives include exemption from Vehicle Excise Duty (car tax)</p> <p>Additional incentive in London: exemption from London Congestion Charge, typically worth around £2000 per annum</p> <p>Tests of EV driver acceptance and adaptation: UK-wide Demonstrator Project with 340 ultra-low carbon vehicles, 100% of drivers were 'more worried about reaching their destination than in a petrol car', but after the 3 months trial this dropped significantly to 35%. Such increased confidence was 'in part due to better understanding of vehicle capabilities, driving techniques and journey planning'.</p> <p>National show: EcoVelocity 201 (5 May - 13 May 2012) held in London ExCel. London Docklands. The event showcases 'the latest in cutting edge technology from the world's leading car manufacturers as well as providing the opportunity for you to test drive the newest low carbon and electric vehicles'.</p> <p>The show will provides 'the opportunity to view the current and future options for more environmentally responsible motoring, get a greater understanding of the technology and processes involved in developing low carbon vehicles and an insight into the benefits of</p>	<p>UK Department for Transport (DfT 2011) and Office for Low Emission Vehicles (OLEV 2011)</p> <p>Source London (main provider of EV charging infrastructure in the capital www.sourcelondon.net)</p> <p>Everett <i>et al</i> (2011) Initial findings of the Ultra Low Carbon Vehicle Demonstrator Programme, research for the Technology Strategy Board, UK</p> <p>www.ecoveloccity.co.uk</p> 

Campaigns	<p>owning one'.</p> <p>Campaigns: through to Spring 2013, the eight national pilots 'Plugged-In Places provide a major focus for geographically based campaigns through their respective websites. As public-private consortia of electric mobility stakeholders (with match funding support from national government), these have coordinated wider promotion of EVs, as appropriate in their areas, thus:</p> <p>Supporting the early market for electric vehicles</p> <p>Contributing to carbon reduction targets</p> <p>Creating a connected network of infrastructure</p> <p>Enabling everyday use of EVs</p> <p>Testing different approaches and models for charging EVs</p> <p>Collecting data on the use of charging posts and EV user behaviours which will influence the national roll out of charging infrastructure</p>	<p>The Plugged-In Places Program is a nationally funded Government initiative led by the Office of Low Emission Vehicles (OLEV)</p> <p>http://infrastructure.switch-ev.co.uk/ev-infrastructure-projects/plugged-in-places</p>
Networks	<p>Supplier networks: the eight Plugged-In Places (P-IPs) have also provided a geographical focus of organizations/ networks of suppliers</p>	<p>As above</p>
Information channels	<p>P-IPs could be regarded as the major EMICs for providing information about EVs and EV infrastructure through their websites</p>	<p>In relation to the NSR, P-IPs in England include:</p> <p>'Charge Your Car' http://chargeyourcar.org.uk/</p> <p>Charge your Car is the North East's Plugged in Places project funded by One North East, OLEV, public and private partners. Over 60 partners in the North East including all twelve Local Authorities</p> <p>'Evalu8' www.evalu8-ti.org.uk/about-us/about-plugged-in-places-project/</p> <p>Evalu8, the East of England's Plugged in Place, which is facilitating the installation of 1,200 charging points across the East of England.</p> <p>Source London www.sourcelondon.net</p> <p>Source London aims to</p>

		deliver 1,300 public charging points across Greater London by 2013, and is part of the Mayor's plans for London to become the electric vehicle capital of Europe. The aspiration is to have 100,000 electric vehicles on the road as soon as possible.
Others	-	-

8. Examples of E-Mobility activities, campaigns and information channels in Sweden

Name and contact data for beneficiary supplying the data:

Name of Beneficiary:	Lindholmen Science Park	
Country:	Sweden	
Contact person:	Name:	Martin Borgqvist
	E-mail:	Martin.borgqvist@lindholmen.se
	Phone:	+46 723 61 24 24

Data category:	Data:	Source:
Activities	<ul style="list-style-type: none"> • Elbilsupphandlingen • Supermiljöbilspremien • Öresund electric car rally • Activities within Green Highway • National demo program for electric vehicles 	http://www.elbilsupphandlingen.se http://www.riksdagen.se/sv/Dokument-Lagar/Lagar/Svenskforfattningssamling/Forordning-20111590-om-supe_sfs-2011-1590/ http://www.oecr.org http://www.greenhighway.nu http://energimyndigheten.se/Press/Nyheter/Utlysning-Demonstrationsprogram-for-Elfordon/
Campaigns	-	-
Networks	-	-
Information channels	-	-
Others	-	-

9. Examples of E-Mobility activities, campaigns and information channels in Norway

Name and contact data for beneficiary supplying the data:

Name of Beneficiary:	ZERO
Country:	Norway
Contact person:	Name: Benjamin Myklebust
	E-mail: Benjamin@zero.no
	Phone: +47 90880531

Data category:	Data:	Source:
Activities	<p>Political agreement on continued EV incentives (no tax, etc) until 2017.</p> <p>ZERO11 conference. Displaying electric Golf and Smart for the first time.</p> <p>Nissan Leaf passing 1.000 sold vehicles, April 2012</p>	<p>http://bil.aftenposten.no/bil/--Klimaforliket-er-en-halv-seier-for-elbilistene-21788.html</p> <p>http://www.regjeringen.no/nb/dep/md/pressesenter/pr essemeldinger/2012/miljov ernministeren-overrekker-nokkel-ti.html?id=679408</p>
Campaigns	<p>General campaigns for Leaf and i-MiEV in Oslo.</p> <p>ZERO Rally 2012</p>	<p>http://www.zerorally.org/mads-ostberg-wins-zero-rally-2012</p>
Networks	Elbilforeningen is an association for EV owners.	www.elbil.no
Information channels	<p>www.klimabiler.no</p> <p>www.gronnbil.no</p> <p>www.elbil.no</p>	
Others	www.ladestasjoner.no	

Appendix 1 – Instruction and questionnaire

WP6 Activity 6.2

Subject: E-Mobility NSR Activity 6.2: Call for information

Dear E-Mobility NSR WP6 partners,

As Responsible Beneficiary for E-Mobility NSR Work Package 6 “Set up Transnational Electric Mobility Information Centres (EMIC)”, we would like to draw your attention to **Activity 6.2**:

Mapping current activities, campaigns, networks and information channels aimed at penetrating the market.

Activity 6.2 aims at developing a transnational “snapshot” of all relevant, market oriented E-Mobility activities covering the period of 01/09/2011 to 31/07/2012. This information is considered to be an important input to the development of the EMIC guidelines (Activity 6.8).

In your role as an Activity 6.2 Beneficiary we need to call for information from your country.

Please find enclosed a questionnaire that will help you gather the relevant pieces of information. On top of a brief description of all relevant activities, we kindly ask you to provide your sources of information, and if possible, copies of articles, of campaigns, links to homepages, to video clips etc.

Deadline for submitting the questionnaire (plus relevant documentation) to SteenOle@htk.dk: 24/08/2012.

In advance, thank you very much for your kind assistance. We will of course share the collective outcome of Activity 6.2, as soon as, we have compiled all input.

Yours faithfully,

Steen Olesen
Project Manager

Høje-Taastrup Municipality
E-Mobility NSR WP6 Lead Beneficiary

Questionnaire for E-Mobility NSR Activity 6.2

Beneficiary:

Name of Beneficiary:		
Country:		
Contact person:	Name:	
	E-mail:	
	Phone:	

E-mobility NSR information: Current activities, campaigns, networks and information channels aimed at penetrating the market.

Focus period: 01/09/2011 - 31/07/2012		Guide section	Input section ¹
Information:	Examples:	Information description:	Source ² :
Activities:	<ul style="list-style-type: none"> • Incentives, laws/regulations and/or initiatives related to E-Mobility • Major development, test and/or demonstration programmes involving electric vehicles • Shows and similar focussing or including EVs 		
Campaigns:	<ul style="list-style-type: none"> • Public information campaigns • Corporate E-mobility advertising 		
Networks:	<ul style="list-style-type: none"> • Organisations/networks for users/potential users of EV's • Organisations/networks for suppliers of EV's and related products and services 		
Information channels:	<ul style="list-style-type: none"> • EMIC (or similar) in your country? • Local public and/or private E-Mobility web pages with information about EVs 		
Others:	<ul style="list-style-type: none"> • Information other than the above but still considered relevant to WP6 		

When completed please E-mail the questionnaire with enclosures to SteenOle@htk.dk. Deadline: 24/08/2012.

¹ When writing the boxes will automatically expand to the needed size – however please make sure "Information description" and "source" is horizontally aligned in each case.

² E.g. reference to enclosures of copies, links to web pages, link to videos, sources etc. Preferably all physical material should be scanned into PDF or MS Office format. In case of many pages/large size/non-scan able objects or similar please contact Lead Beneficiary for delivery by mail.

Appendix 2 - “Benchmark elektrisch rijden” from Holland

Note: Only front page included for reference.



Elektrisch vervoer in Nederland in internationaal perspectief

Benchmark elektrisch rijden 2012

M. Weeda (ECN)
P. Kroon (ECN)
D. Appels (Agentschap NL)

4 juli 2012
ECN-E—12-026



Appendix 3 - "Cijfers Elektrisch Rijden" from Holland



Agentschap NL, Juli 2012

Cijfers Elektrisch Rijden

(t/m juni 2012)

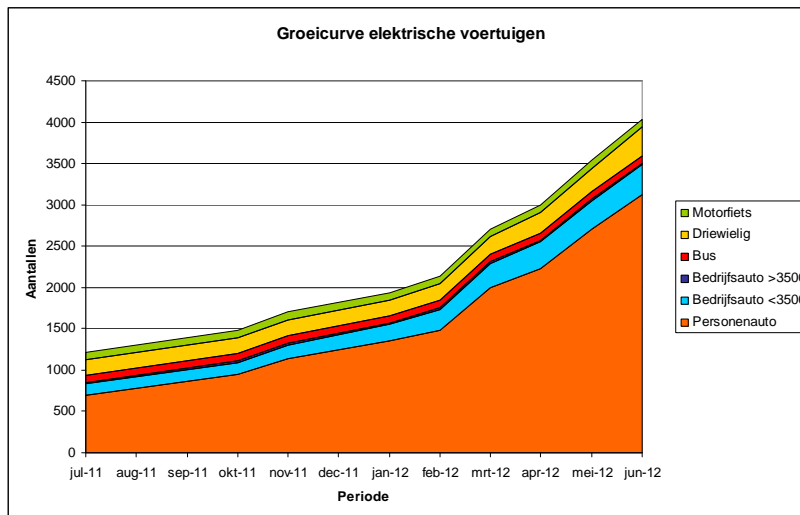
Dit overzicht geeft een indruk van de ontwikkeling van elektrisch rijden in Nederland. Het wordt maandelijks samengesteld door Agentschap NL, in opdracht van het ministerie van EL&I. De cijfers mogen met bronvermelding (Agentschap NL) gebruikt worden.

Aantallen elektrische voertuigen ¹

Type voertuig	Aantal per	Eind 2011	30-04-2012	31-05-2012	30-06-2012
Personenauto (FEV)		1.124	1.446	1.517	1.606
Personenauto (E-REV, PHEV)		15	785	1.183	1.510
Bedrijfsauto < 3500		164	318	344	368
Bedrijfsauto > 3500		21	22	23	23
Bus *		91	89	89	89
Driewielig		191	243	286	342
Motorfiets		96	94	95	100
Totaal		1.702	2.997	3.537	4.038

* Inclusief trolleybussen

Ontwikkeling in het aantal elektrische voertuigen op de weg in Nederland ²



¹ RDW

² RDW

Note: Only front page included for reference.

Appendix 4 - "Achtergrondinformatie Elektrisch Rijden" from Holland



Agnetschap NL, juli 2012

Achtergrondinformatie Elektrisch Rijden

(2^e kwartaal 2012)

Prestatie elektrische (personen) auto

Actieradius

Het bereik van de elektrische personenauto verschilt afhankelijk van de grootte van de batterij, het gewicht van de auto en de aandrijflijn (zie onderstaande tabel; op basis van gegevens fabrikanten).

In de praktijk wijkt de actieradius vaak af door omstandigheden; zo zijn bijvoorbeeld het weer, het rijgedrag en de rijnsnelheid van invloed op de actieradius.¹

Type auto	Bereik
Auto's met beperkte snelheid	50-100 km
Compacte middenklasser (batterijpakket van 24 kWh)	150 km
Modernere versies	350 km
Plug-in Hybrides*	400 km
Range Extenders**	500 km

* Bereik volledig elektrisch is circa 20 km

** Bereik volledig elektrisch is circa 80 km

- o Gemiddelde woon/werkafstand van automobilisten: 21,5 km.
- o Lengte van de gemiddelde autorit: 16,7 km.
- o Gemiddelde jaarkilometrage Nederlandse wagenpark in binnen- en buitenland: ruim 13.300 km (in 2010) voor alle auto's (ca. 10.800 km voor benzine, 23.800 km voor diesel, 17.500 km LPG).²

Energetisch

- o Het berekenen van het energetisch rendement en CO₂-emissies van elektrische auto's is geen sinecure. Er is niet één wetenschappelijk exacte methode om die te bepalen en, afhankelijk van het doel waarvoor je energetisch rendement en CO₂-emissies wilt bepalen, is overeenstemming nodig over te hanteren uitgangspunten en rekenmethodiek (dergelijke afspraken zijn er nog niet).
- o Wel is een elektrische auto is vanwege de hoge efficiency van de elektromotor een milieuvriendelijk alternatief voor auto's met een conventionele aandrijving (bv. benzinemotor). Op voertuigniveau (tank-to-wheel) is het energetisch rendement van een elektrische aandrijving een factor 3 tot 4 beter dan van een conventionele aandrijving op basis van een benzinemotor. Daar tegenover staat de well-to-tank keten. Op dat punt scoren conventionele voertuigen weer beter. Hoe groot dit verschil is wordt mede bepaald door de herkomst van de elektriciteit: welke productie-unit (conventioneel of groen) gaat iets harder draaien als ik mijn elektrische auto aan het stopcontact hang?

¹ Startgidsen Elektrisch vervoer voor gemeenten en bedrijven (www.formuleeteam.nl)

² CBS Statline, gegevens november 2011

Note: Only front page included for reference.